

A tour through Vimba

For developers



vimba

Vimba – the right choice for all applications

Vimba is the powerful **GenICam-based SDK** for cameras from Allied Vision.

Vimba lets you program in **C, C++, .NET, or Python**.

You can also use your camera with your favorite software.



GEN*<i>*CAM

vimba

Program Files > Allied Vision > Vimba_x.x

Name

- Adapters
- Documentation
- ThirdParty
- Tools
- Vimba1394TL
- VimbaC
- VimbaCLConfigTL
- VimbaCPP
- VimbaGigETL
- VimbalImageTransform
- VimbaNET
- VimbaPython
- VimbaUSBTL

Depending on the OS
and selected installation
options, different items
are available.

To quickly access Vimba's components, navigate to the Allied Vision Vimba program folder:

Program Files -> Allied Vision -> Vimba_x.x



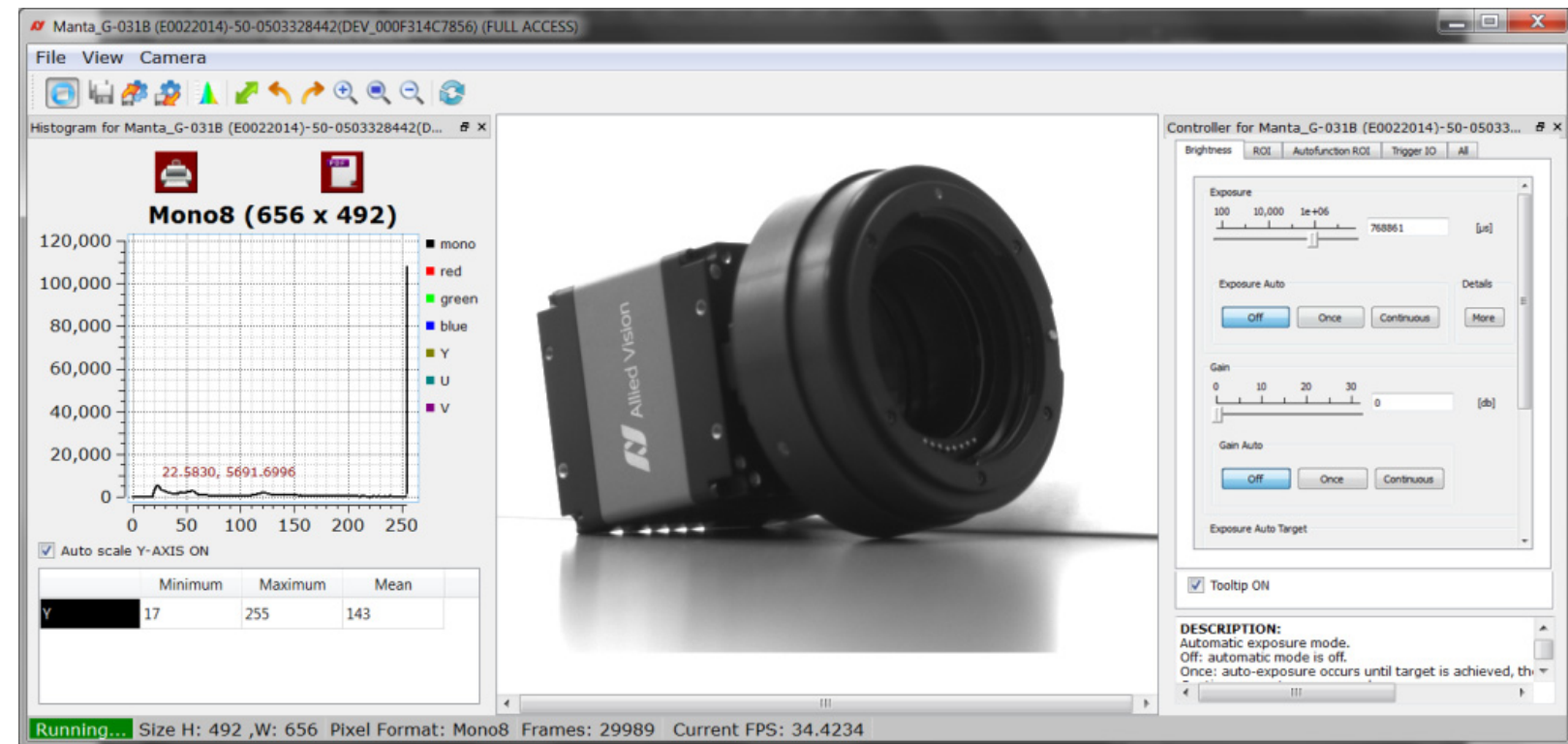
vimba

Program Files > Allied Vision > Vimba_x.x > Tools

Name

- ClassGenerator
- DriverInstaller
- FirmwareUpdater
- Viewer**


A good way to start exploring your camera is the **Vimba Viewer**.





vimba

Program Files > Allied Vision > Vimba_x.x > Documentation


Name


 open-source-licenses.txt

 ReleaseNotes.txt

 Vimba Manual.pdf

 Vimba Quickstart Guide.pdf

 Vimba Tour.pdf

 Vimba Viewer Guide.pdf

The **Vimba Quickstart Guide** is the perfect starting point for our comprehensive documentation.

Development

Recommended reading order

To get started with Vimba, we recommend the following reading order:

1. Vimba Manual
2. Vimba C, C++, .NET, or Python Manual
3. Vimba Transport Layer Manual
4. Vimba Image Transform Manual (if you use this library)

All documents are available in the Vimba program folder. Some documents are available only if all Vimba components are installed.

Additionally, please read the technical documentation for your camera, which is available at <https://www.alliedvision.com/>.



(C:) OS > Users > Public > Public Documents > Allied Vision

Name

 Vimba_x.x

Find programming examples in the folder you selected during the Vimba installation, e.g.:

Examples Target Folder

C:\Users\Public\Documents\Allied Vision\Vimba_x.x

Windows users can also find the examples in the apps list.



Finding examples in the apps list

VIMBA




GEN*<i>*CAM

Do you use a GenICam-compliant **third-party software**?

It will automatically find and connect with Vimba's transport layers.

Program Files > Allied Vision > Vimba_x.x > VimbaGigETL > Documentation

Name

-  GigE_Features_Reference.pdf
-  ReleaseNotes.txt
-  VimbaGigETLFeaturesManual.pdf



vimba

More information

More questions?
Our staff is happy to assist you.

www.alliedvision.com

Enjoy working with Vimba!



vimba